

RESQME

Näytä verkossa



The ResQMe is designed to break vehicle side windows and cut through jammed seat belts.

ILLBY PLAST
plast - muovi - plastics

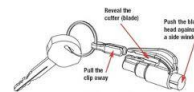
The ResQMe Multi Tool

The ResQMe Tool is suitable, not only for firefighters and emergency responders to keep in their pockets, but also for anyone who would be able to use the tool in case of their own family emergency. The tool will also work underwater should the worst imaginable event happen.

[BROCHURE CRAFT and RESQME](#)

Product Description

The ResQMe is like a mini LifeHammer that fits on your key ring. The ResQMe is designed to break vehicle side windows and cut through jammed seat belts.



The window breaker is a spring-loaded metal spike. When pressed against a side window the spring releases and the metal tip shatters the glass allowing you and your family to escape. The spike is automatically reset after use and can be reused many times. (Approximately 12 lbs. of force is required to release the spike.)

The blade guard attaches to your keychain and protects against unintended use. When attached to your keychain the ResQMe stays firmly in place, yet detaches easily with a sharp tug when necessary. To use the seat belt cutter, hook over the seat belt and pull.

The ResQMe was awarded the Gold Medal for Best Automotive Product of

ILLBY PLAST

illbyplast.com
+358(0)19656905

Ilolan Kartanon tie 43
FIN-07280 ILOLA

the year in 2004.

Features

- Hardened steel tip.
- Protected blade to cut through seat belts.
- Compact and lightweight, carry it with you anywhere.

Artikle nummer	00214
Maße (L x B x H)	90x30x20mm
Weight	20 g
Material info	Plastics and steel
Wechselbare klinge	Not exchangeable
Rostfreie Stahl	No
Detektiebare	No
Farge	See Webstore
Lebensmittelindustrie	No
Bestellnummer	00214
Verpackungseinheit	Gift box 1 piece