

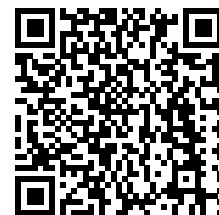
# Säkerhetskniv MARTOR SECUPRO 625

Näytä verkossa

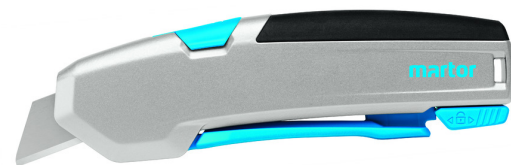
An aluminium handle, an easy and smooth lever to release the blade, a large cutting depth combined with a very high safety due to the fully automatic blade retraction and a comfortable blade change.

## ILLBY PLAST

plast - muovi - plastics



All highlights at a glance.



MARTOR SECUPRO 625

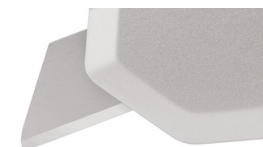
### Excellent ergonomics

We have rarely produced a cutting tool before that fits so perfectly into the heavy users hand as the SECUPRO 625. The long and smooth lever, the round shape of the handle and the soft-grip at the back of the knife – it's more than worth testing it!



### Robust and balanced

You can see and feel that the handle is made of high-quality aluminium. Its robust construction goes hand in hand with an optimal weight distribution. Consequently, there's almost no risk of weakening for tool and user. Not even when cutting very heavily.



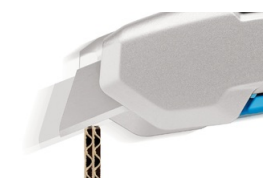
### Large cutting depth

The long blade extension is ideal for cutting up to 3-ply cardboard boxes, rubber, material on reels and many more applications. The blade can be changed in a few steps – by operating the blade change button and pressing the lever, it can be easily pulled out.

## ILLBY PLAST

illbyplast.com  
+358(0)19656905

Ilolan Kartanon tie 43  
FIN-07280 ILOLA



## For many cutting types

The overall package of the SECUPRO 625 is quite unique – and so are all separate features. Even saw cutting is safe – thanks to the protecting blade retraction. And you can enlarge the number of different application areas by simply installing one of the optional blades.



## Safe along the line

While you rely on the blade retraction at the front part of the handle, there's another safety feature built in for even more protection. You can lock the lever and thus avoid that the blade is released unintentionally.

|                   |                              |
|-------------------|------------------------------|
| Article number    | 625001                       |
| Material          | Plastics / Aluminium         |
| Blade change      | YES                          |
| Stainless steel   | YES                          |
| Detectable        | NO                           |
| Color             | Black/blue                   |
| Food safe         | NO                           |
| Order number      | 625001.02                    |
| Measurements      | 154x22x67mm                  |
| Weight product    | 151 g                        |
| Cutting depth     | 21 mm                        |
| Replacement blade | 60099 see option in webstore |
| Packaging unit    | 1 in single unit box         |
| GS-Certificate    | 602091-5862-55094-2015/2 C   |
| EAN               | 4002632921865                |